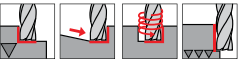
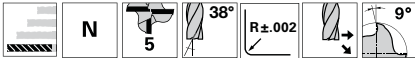




RF 100 5 Speed - XL length, corner radii

Series

6988



Tool material

Solid Carbide

Coating

nano-AT™

nano-AT™

Type

N

N

Shank



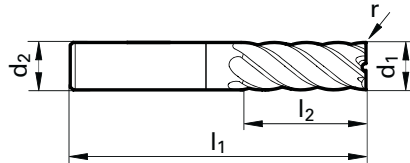
Internal cooling



Material		Suitability
P	Steel	●
M	Stainless steel	●
K	Cast iron	●
N	Aluminum	○
S	Ni / Ti alloys	●
H	Hardened steel	
	Composites	

●=Optimal ○=Secondary

• without center cutting



d1 h10	d2 h6	l1	l2	r	No. of flutes	Code code	EDP Number	EDP Number
inch	inch	inch	inch	inch				
1/4	1/4	3	1	0.02	5	6.352	9069880063520	
1/4	1/4	3	1	0.03	5	6.354	9069880063540	
1/4	1/4	3	1	0.06	5	6.356	9069880063560	
3/8	3/8	3 1/2	1 1/2	0.02	5	9.522	9069880095220	
3/8	3/8	3 1/2	1 1/2	0.03	5	9.524	9069880095240	
3/8	3/8	3 1/2	1 1/2	0.06	5	9.526	9069880095260	
3/8	3/8	3 1/2	1 1/2	0.09	5	9.527	9069880095270	
1/2	1/2	4	1 5/8	0.03	5	12.704		9069880127040
1/2	1/2	4	1 5/8	0.06	5	12.706		9069880127060
1/2	1/2	4	1 5/8	0.09	5	12.707		9069880127070
1/2	1/2	4	1 5/8	0.12	5	12.709		9069880127090
5/8	5/8	4 1/8	2 1/8	0.03	5	15.874		9069880158740
5/8	5/8	4 1/8	2 1/8	0.06	5	15.876		9069880158760
5/8	5/8	4 1/8	2 1/8	0.09	5	15.877		9069880158770
5/8	5/8	4 1/8	2 1/8	0.12	5	15.879		9069880158790
3/4	3/4	5	2 5/8	0.03	5	19.054		9069880190540
3/4	3/4	5	2 5/8	0.06	5	19.056		9069880190560
3/4	3/4	5	2 5/8	0.09	5	19.057		9069880190570
3/4	3/4	5	2 5/8	0.12	5	19.059		9069880190590
3/4	3/4	5	2 5/8	0.19	5	19.050		9069880190500
1	1	6	3 1/4	0.03	5	25.404		9069880254040
1	1	6	3 1/4	0.06	5	25.406		9069880254060
1	1	6	3 1/4	0.09	5	25.407		9069880254070
1	1	6	3 1/4	0.12	5	25.409		9069880254090
1	1	6	3 1/4	0.19	5	25.400		9069880254000
1	1	6	3 1/4	0.25	5	25.401		9069880254010